

Cheshire West & Chester Council

Recycling Matters



Great news. Last year

we recycled 59.1%

of all household waste – which is higher than the national average.

In fact, our borough is in the top 5% for recycling in England.

This fantastic achievement is thanks to the many residents who are playing their part and recycling as much as they can.

Let's keep up the good work and make every effort to reach our next target of **64%**.

59.1%

of all household waste recycled

A glance at what we recycled in 2024:

9,255 tonnes
of food waste

26,877 tonnes
of garden waste

12,606 tonnes
of paper & cardboard

15,983 tonnes
of plastic, glass and metal

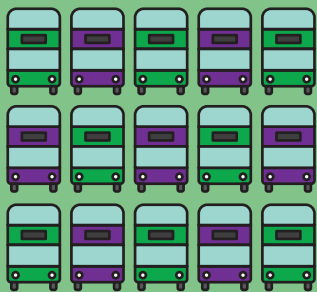
Find out how inside



Cheshire West
Recycling



Cheshire West
and Chester



In 2024 over **65,000 tonnes of materials** were collected for recycling, reuse or composting from households in the borough.

That's the same as about 4,500 double-decker buses.

99.6% of this waste was sent to reprocessors here in the UK before going on to be turned into new materials.



What happens to your recycling?



Plastics are washed, melted and turned into pellets to make new products like bottles, packaging and even clothing.



Metals are shredded, melted and purified before being made into valuable metal ingots.

Metal can be recycled again and again!



Glass is sorted by colour, crushed into cullet and melted at 1,500°C to make new bottles and jars.



Paper and card is shredded, pulped and pressed into new sheets.



Food waste is taken to an anaerobic digestion facility where it is broken down naturally to produce green energy and a rich fertiliser for growing new crops.

Every item you recycle helps the planet - and that's a responsibility we all share.

Each year around **43%** of what's put in an average black bin could be saved.

Think before you throw to stop good recycling from going to waste.



Your black bin may not be emptied if it contains waste that could be collected through the kerbside recycling service.

Where does your recycling go?

Spotlight on Aluminium: The Forever Metal

Aluminium can be endlessly recycled without losing quality, making it one of the most valuable materials in your red-lidded bin. It's 100% recyclable FOREVER, with 75% of all aluminium ever made still in use today.



But have you ever wondered what actually happens to your cans after collection?

The lifecycle of a drinks can

1. Sorting

The contents of your red-lidded bin are transported to our Materials Recovery Facility where they are sorted. A special machine uses magnetic forces to separate aluminium cans from other materials.

2. Reprocessing

Cans are baled, shredded and heated at 500°C to remove coatings before being melted at 750°C. The molten metal is cooled into solid ingots.

3. Rolling

The ingots are heated and rolled into thin sheets to the exact thickness needed for new cans.

4. Can Making

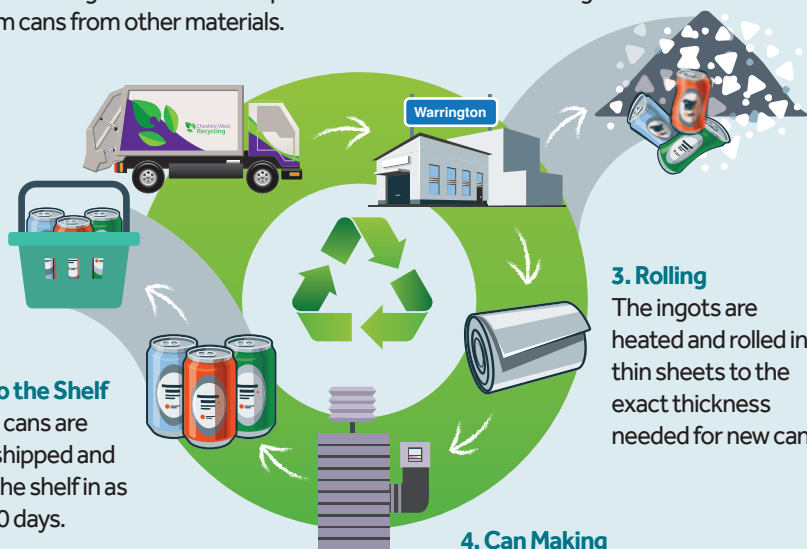
The aluminium sheets are punched into discs, then shaped into cans by being pushed through a series of rings. The cans are printed, coated for protection, and oven dried.

6. Back to the Shelf

Recycled cans are packed, shipped and back on the shelf in as little as 60 days.

5. Filling and Sealing

The cans are cleaned, filled with carbon dioxide and liquid contents, and sealed. Up to 2,000 can be filled and sealed every minute.



What goes where?

Red lidded bin

Yes please

Place your recycling loose in the container – **no plastic bags.**



Clean plastic bottles, including lids



Pots and tubs



Clean glass bottles and jars



Empty aerosols, such as room spray and deodorant



Tins and cans



Clean foil and foil takeaway trays

No thanks ✗

- Black plastic
- Plastic packaging & wrapping
- Polystyrene
- Nappies & sanitary items
- Vapes & electrical items
- Hard plastic, such as toys



Blue lidded bin

Yes please

Place your recycling loose in the container – **no plastic bags.**



Paper



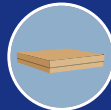
Newspaper, magazines and directories



Junk mail and envelopes, including windowed envelopes



Paper gift wrap and plain gift cards



Cardboard boxes (with all other packaging removed)



Shredded Paper



Tetra Pak[®] / cartons

No thanks ✗

- Plastic packaging & wrapping
- Textiles
- Tissues & kitchen roll
- Glass items
- Bagged waste



Recycling more of these items will help you save space in your black bin

Find out what else you can recycle at:

www.cheshirewestandchester.gov.uk/your-bin

Brown bin or caddy

Food waste must be placed in your brown caddy. This includes leftovers and spoilt produce – including raw and uncooked meat, fish and bones; fruit and vegetable peelings, tea bags, coffee grounds, eggshells, pet food and produce from your pantry.

Do not put packaging of any sort, plastic film or lids in your food caddy.



To keep cleaning to a minimum, you can line your caddy with a compostable liner, plastic bag or newspaper.

You MUST NOT place food waste in your other containers. You can order a caddy online for free.



Your black bin may not be emptied if it contains food waste and other recycling.

Scan to order a food caddy



Good to know...
Just one caddy of food waste can **generate enough electricity to power a home for an hour.**



Let's get recycling right

Recycling only works when we do it properly.



The wrong things in a container can make an entire load unrecyclable or pose a risk to staff who hand-sort some of the materials.

To help you recycle right, we're introducing bin tags.

- If it's just a few incorrect things, we'll still empty your bin and leave an amber tag with tips to help you get it right next time.
- If there are too many non-recyclables or something dangerous, we'll leave your bin and place a red tag on it instead. You'll need to remove these items before we can collect your container next time.



Households that require extra help on how to improve their recycling may receive a visit from a member of our waste team.



What else can you recycle?

Other items

You can also recycle these items at the kerbside. Simply leave them in a separate container next to your recycling.



Spectacles



Household batteries



Mobile phones



Small printer cartridges



Small electricals
(smaller than a toaster)



Cooking oil
(leave in a sealed container next to your food caddy)

Textiles

Textiles are no longer collected for recycling at the kerbside and should not be placed in your blue bin – or any other container.

Instead, usable items should be rehomed, taken to a charity shop or a clothing collection point.



All waste produced by a tradesperson (e.g. a builder, plumber, gardener, carpet fitter) working in your home is commercial waste and they must arrange disposal by hiring a skip or taking the waste to a licenced disposal site.

Carrying out home improvements or having a clear out?

Make sure your waste is in safe hands

If rubbish from your home ends up fly-tipped by someone else or brought illegally by a tradesperson to a household waste recycling centre, you could be fined.

Protect yourself with these simple steps:

- Ask for their waste carrier's licence number and verify it at gov.uk/check-waste-carrier.
- Get a receipt
- Always get paperwork showing who took your waste and where it's going.
- Take a photo of the van, licence plate and driver - it's a useful record in case your waste is involved in a crime.

Your waste is your responsibility.



Community Re-Focus

Changing Lives Together is a charity and social enterprise offering a range of services to support the local community.

From giving preloved furniture a new lease of life to stocking 'ReUseful' appliances, 'ReCycle' bikes, and 'Re-Use' paint, the organisation delivers sustainable solutions that benefit both people and the planet.

To tackle food waste and support affordable living, **Changing Lives Together** also partners with local supermarkets, suppliers and distributors to offer low cost, high quality food options to Cheshire residents at their Winsford and Northwich social supermarkets. The Very Green Grocery is open 3 times a week offering frozen, chilled, bakery and ambient products all for just £7 per visit.



Changing Lives Together is our chosen provider for our bulky items collections, such as preloved white goods and furniture. Whilst based in Winsford and Northwich, the charity's impact extends right across Cheshire.

Find out more about their services or discover how you can get involved at: www.changing-lives-together.org.uk

Ensure your recycling and waste is out for 6am

The wellbeing of our recycling and waste crews is important to us, which is why we're making a change to the time your waste and recycling containers must be at the kerbside.

Please put your containers out by the earlier time of 6am. This means we can collect your waste and recycling earlier if we need to, for example at times of high temperatures or other severe weather conditions. This will help keep our teams safe and make sure that we can collect your bins on your scheduled day.

To ensure you don't miss a collection, please make sure your bins are ready for our crews at the kerbside by **6am**.

We won't be able to return for bins that were not out on time.



Follow Cheshire West Recycling on Facebook for more recycling insights and news.

For more information about your recycling service or for guidance on what and how to recycle, visit: [cheshirewestandchester.gov.uk/your-bin](https://www.cheshirewestandchester.gov.uk/your-bin)

Accessing Cheshire West and Chester Council information and services

Council information is also available in audio, Braille, large print or other formats. If you would like information in another format or language, including British Sign Language, please email us at: equalities@cheshirewestandchester.gov.uk

You can also telephone: **0300 123 8 123**
or textphone: **18001 0300 123 8 123**
website: www.cheshirewestandchester.gov.uk



Scan me
for more
information